

2007 Project Abstract

For the Period Ending June 30, 2009

TITLE: Metro Conservation Corridors – Phase III
Overall Summary
PROJECT MANAGER: Bill Becker (Wayne Sames – temporary)
ORGANIZATION: MN Department of Natural Resources
ADDRESS: 500 Lafayette Road
St. Paul, MN 55155-4010
WEB SITE ADDRESS: www.dnr.state.mn.us/metroconservationcorridors
FUND: Environmental and Natural Resources Trust Fund
LEGAL CITATION: Minnesota Laws 2007, Chapter 30, Section 2, Subdivision 4(c)

APPROPRIATION AMOUNT: \$2,500,000

OVERALL PROJECT OUTCOME AND RESULTS

During the third phase of the Metro Corridors project, the Metro Conservation Corridors Partners continued their work to accelerate protection and restoration of remaining high-quality natural lands in the greater Twin Cities Metropolitan Area by strategically coordinating and focusing conservation efforts within a connected and scientifically-identified network of critical lands. This corridor network stretches from the area's urban core to its rural perimeter, including portions of 16 counties.

The Partners employed a multi-faceted approach, which included accomplishments in four specific result areas:

1. *Coordinate Metro Conservation Corridors and Metro Greenways Programs:* Partners met quarterly to review project accomplishments and coordinate activity. With DNR support, the partners also launched development of an online database to facilitate tracking and reporting of MeCC projects over time.
2. *Restore and Enhance Significant Habitat:* Collectively, the partners restored 770 acres of land, including 1.26 miles of shoreline. Restoration of an additional 259 acres was completed using other funds.
3. *Acquire Significant Habitat:* Collectively, the partners protected 721 acres of land, including more than one-half mile of shoreline through acquisition of fee title and conservation easements and leveraged an additional 232 acres of land and ¼-mile of shoreline using other funds.
4. *Provide Community Conservation Assistance:* The Metro Greenways Program assisted four cities and two counties with the integration of natural resources information into local development and conservation planning and policy decisions.

Accomplishments during this phase also helped address a number of recommendations of the Statewide Conservation and Preservation Plan, including: protecting priority land habitats; protecting critical shorelands of streams and lakes; restoring land, wetlands, and wetland-associated watersheds; and improving connectivity and access to outdoor recreation.

PROJECT RESULTS USE AND DISSEMINATION

As projects were completed, the individual partners were encouraged to publicize accomplishments through press releases, organization newsletters, and websites. These efforts resulted in information being distributed to the public through websites, email lists, daily and weekly newspapers, newsletters, and other print materials. Additionally, once the MeCC database development is complete, the partnership hopes to be able to better disseminate information on its accomplishments through a public web portal.

Trust Fund 2007 Work Program Final Report

Date of Report: March 1, 2010

Date of Work program Approval:

Project Completion Date: 6/30/09

I. PROJECT TITLE: Metro Conservation Corridors (MeCC) Phase III:
Overall Summary

Project Manager: Wayne Sames
Affiliation: MN Dept of Natural Resources
Mailing Address: 500 Lafayette Road
City / State / Zip : St. Paul, MN 55155-4010
Telephone Number: 651-259-5559
E-mail Address: wayne.sames@dnr.state.mn.us
FAX Number: 651-296-6047
Web Page address: www.dnr.state.mn.us/metroconservationcorridors

Location: Within mapped Focus Area in the counties of Anoka, Carver, Chisago, Dakota, Goodhue, Hennepin, Isanti, LeSueur, Nicollet, Ramsey, Rice, Scott, Sherburne, Sibley, Washington and Wright. See Figure 1.

Total Trust Fund Project Budget:	Trust Fund Appropriation:	\$	2,500,000
	Minus Amount Spent:	\$	2,465,225
	Equal Balance:	\$	34,775

Legal Citation: ML 2007, Chapter 30, Section 2, Subdivision 4c

Appropriation Language: (c) Metro Conservation Corridors- Phase III

\$2,500,000 is from the trust fund to the commissioner of natural resources for acceleration of agency programs and cooperative agreements with The Trust for Public Land; Friends of the Mississippi River; Great River Greening; Minnesota Land Trust; Minnesota Valley National Wildlife Refuge Trust, Inc.; Trout Unlimited; and Friends of the Minnesota Valley for the purposes of planning, restoring, and protecting important natural areas in the metropolitan region, as defined by Minnesota Statutes, section 473.121, subdivision 2, and portions of the surrounding counties, through grants, contracted services, conservation easements, and fee acquisition. Land acquired with this appropriation must be sufficiently improved to meet at least minimum management standards as determined by the commissioner. Expenditures are limited to the identified project corridor areas as defined in the work program. This appropriation may not be used for the purchase of residential structures, unless expressly approved in the work program. All conservation easements must be perpetual and have a natural resource management plan. Any land acquired in fee title by the commissioner of natural resources with money from this appropriation must be designated:(1) as an outdoor recreation unit under

Minnesota Statutes, section 86A.07; or (2) as provided in Minnesota Statutes, sections 89.018, subdivision 2, paragraph (a); 97A.101; 97A.125; 97C.001; and 97C.011. The commissioner may similarly designate any lands acquired in less than fee title.

II. AND III. FINAL PROJECT SUMMARY:

During the third phase of the Metro Corridors project, the Metro Conservation Corridors Partners continued their work to accelerate protection and restoration of remaining high-quality natural lands in the greater Twin Cities Metropolitan Area by strategically coordinating and focusing conservation efforts within a connected and scientifically-identified network of critical lands. This corridor network stretches from the area's urban core to its rural perimeter, including portions of 16 counties.

The Partners employed a multi-faceted approach, which included accomplishments in four specific result areas.

1. *Coordinate Metro Conservation Corridors and Metro Greenways Programs:* Partners met quarterly to review project accomplishments and coordinate activity. With DNR support, the partners also launched development of an online database to facilitate tracking and reporting of MeCC projects over time.
2. *Restore and Enhance Significant Habitat:* Collectively, the partners restored 770 acres of land, including 1.26 miles of shoreline. Restoration of an additional 259 acres was completed using other funds.
3. *Acquire Significant Habitat:* Collectively the partners protected 721 acres of land, including more than one-half mile of shoreline through acquisition of fee title and conservation easements and leveraged an additional 232 acres of land and ¼-mile of shoreline using other funds.
4. *Provide Community Conservation Assistance:* The Metro Greenways Program assisted four cities and two counties with the integration of natural resources information into local development and conservation planning and policy decisions.

Accomplishments during this phase also helped address a number of recommendations of the Statewide Conservation and Preservation Plan, including, protecting priority land habitats, protecting critical shorelands of streams and lakes, restoring land, wetlands, and wetland-associated watersheds, and improving connectivity and access to outdoor recreation.

IV. OUTLINE OF PROJECT RESULTS:

Result 1: Coordinate Metro Conservation Corridors and Metro Greenways Programs

The work of the partners to conserve habitat and natural areas threatened by development was coordinated and prioritized to increase cost-effectiveness and efficiently leverage private and public resources. This project component represented 2 years of implementation support for the management and coordination of the overall program and the Metro Greenways component within it.

Summary Budget Information for Result 1:

Trust Fund Budget:	\$ 165,000
Amount Spent:	\$ 150,572
Balance:	\$ 14,428

Deliverable

Bi -annual progress reports on overall results

Final Completion Date: 6/30/2009

Final Report Summary:

MeCC Partners met quarterly to discuss progress on accomplishments and coordinate protection, restoration, and community assistance efforts. Partners also launched development of a project database that will help track and report progress of the partnership over time.

Result 2: Restore & Enhance Significant Habitat

Description: Partner organizations restored approximately 770 acres of significant upland, shore land and/or wetland habitat within the corridors. This includes Metro Greenways providing grants for restoration work to a local unit of government and a non-profit organization. These two grants were selected through a request for proposal process (RFP) that included broad eligibility and outreach.

Summary Budget Information for Result 2:

Trust Fund Budget:	\$ 279,416
Amount Spent:	\$ 265,069
Balance:	\$ 14,347

Deliverable

1. 203 acres restored

Final Completion Date: 6/30/2009

Final Report Summary:

Collectively, six partners restored 770 acres of land, including 1.26 miles of shoreline at 32 sites. Restoration of an additional 259 acres was completed using other funds.

Restoration activities were focused, and often coordinated, on improving habitat within SNA's and on other important public lands, restoring wetlands, and restoring habitat along trout streams.

A summary of each sub-result is provided below. For additional information and details on projects and expenditures, please see Table A and the individual work program final reports.

2.1: Restore/Enhance Significant Watershed Habitat – Friends of the Mississippi River

Friends of the Mississippi restored a total of 238 acres of significant habitat, including 79 acres using LCCMR funding, 95 acres using non-state funding, and 64 acres with other state funding.

Activities were focused on the following natural areas:

- Sand Coulee Prairie - City of Hastings
- Pine Bend Bluffs Scientific and Natural Area
- Rosemount Wildlife Preserve
- City of St. Paul Parks
- Hastings Wildlife Management Area
- Hastings River Flats Park
- Hastings Sand Coulee Scientific and Natural Area

2.2: Lower Minnesota River Watershed Restoration and Enhancement Project – Friends of the Minnesota Valley

Friends of the Minnesota Valley restored and enhanced a total of 234 acres of wetland within the Lower Minnesota River Watershed, including 165 acres using LCCMR funds and 69 acres using other funds. An additional 28 acres were restored using 2008 LCCMR funds and will be reported in the 2008 work program accomplishments.

Activities were focused on the following areas:

- Porter Creek, Scott County
- Rapids Lake, Carver County

2.3: Restore/Enhance Significant Habitat – Great River Greening

Great River Greening restored a total of 116.5 acres of ecologically significant land, including 86 acres using LCCMR funds and 30.5 acres using other funds.

Activities were focused in the following areas:

- St. Croix River Corridor (Arcola Mills, Afton State Park, Wind in the Pines Park, Tanglewood Nature Preserve, and Camp Waub-O-Jeeg)
- Eagle Creek AMA
- Credit River

2.4: Habitat Restoration/Enhancement Grants – DNR Metro Greenways

DNR Metro Greenways awarded two grants to restore a total of 11 acres of public lands and the project sponsors matched those dollars with \$100,000. At the Bruce Vento Nature Sanctuary in St. Paul neighborhood groups worked with volunteers and the City to remove invasive plant and plant oak woodland and prairie on the

bluffs. Elk River removed invasive species and planted a prairie/savanna in an old pasture that was acquired in 2005 to expand Top of the World City Park.

2.5: Scientific & Natural Area Restoration and Enhancement – DNR Ecological Services

The SNA Program and its partners (including MeCC partner Friends of the Mississippi River) restored and enhanced native habitat on over 429 acres at 12 SNAs within the Metro Conservation Corridors. Specific accomplishments are: 13 acres of prairie restoration work at two sites in Washington and Dakota Counties; 197 acres of prescribed burns (and associated burn break development) at 6 SNAs in Goodhue and Washington Counties; and 219 acres of exotics species removal at 9 sites in Carver, Hennepin, Goodhue, and Washington Counties. This work was necessary to prevent the loss of important species, plant communities and features.

2.6: Stream Habitat Restoration – Trout Unlimited

Trout Unlimited restored 1.26 miles of streams in the Metro area by stabilizing streambanks and incorporating habitat for trout. Trout Unlimited also promoted stream restoration in the Metro area by providing 100 hours of technical assistance to local units of government and non-profit organizations, by creating and presenting a stream restoration display at the Great Waters Expo and the Healthy Waters & Heritage Fair as well as other local conservation venues, by the development of two news releases on key projects, by conducting three workshops, and by distributing handouts and newsletters.

Activities were focused in the following areas:

- Hay Creek, Goodhue County
- Vermillion River, Dakota County
- Brown’s Creek, Washington County

Result 3: Acquire Significant Habitat

Description: Partner organizations protected through conservation easements and/or fee title approximately 721 acres of significant habitat within the identified corridors. This includes Metro Greenways providing funding to two locally nominated projects. Metro Greenways grants were selected through a request for proposal process (RFP) that includes broad eligibility and outreach.

Summary Budget Information for Result 3:	Trust Fund Budget:	\$ 1,955,584
	Amount Spent:	\$ 1,955,584
	Balance:	\$ 0

Deliverable

1. 630 acres acquired

Final Completion Date: 6/30/2009

Final Report Summary:

Collectively, six partners acquired fee title or conservation easements on 18 sites, protecting a total of 721 acres. Acquisition of an additional 232 acres was completed using other funds.

Acquisition activities were focused on building on past projects, such as the Vermillion River, Rum River, and Minnesota Valley National Wildlife Refuge sites. Efforts also focused on acquiring new SNA lands.

A summary of each sub-result is provided below. For additional information and details on projects and expenditures, please see Table A and the individual work program final reports.

3.1: Critical Land Protection Program fee title & conservation easement acquisition – The Trust for Public Land

The Trust for Public Land secured fee title on 118 acres of significant habitat, including 8 acres using LCCMR funding, 59 acres using non-state funding, and 51 acres with other state funding. The properties were then conveyed to public agencies for permanent protection.

Specific acquisitions include the following:

- Franconia St. Croix Bluffs SNA, Chisago County
- Ojiketa Regional Park, Chisago County

3.2: Protecting significant habitat by acquiring conservation easements - Minnesota Land Trust

The Minnesota Land Trust acquired conservation easements to protect 519 acres of land and more than 15,000 feet of shoreline. Contact was initiated with approximately 39 landowners, and 9 perpetual conservation easements were completed. Two easements were purchased, both at a bargain price. The remaining 7 easements were donated.

Projects were focused in the following areas:

- Rum River Watershed, four projects in Isanti County
- Hennepin County Corridors, four projects in Hennepin County
- Wild River State Park, Chisago County

3.3: Fee acquisition for the MN Valley National Wildlife Refuge - Minnesota Valley National Wildlife Refuge Trust, Inc.

The Minnesota Valley National Wildlife Refuge Trust, Inc. acquired fee title on 69 acres of significant habitat in the Minnesota River Valley in Jessenland Township of Sibley County, including 49 acres using LCCMR funding and 100 acres using non-state funding. Additionally, the MN Valley Trust acquired fee title to another 80 acres of significant habitat in the Minnesota River Valley in Faxon Township. After restoration of these parcels, they will be donated to the US Fish and Wildlife Service for perpetual management as part of the Jessenland Unit of the Minnesota Valley National Wildlife Refuge.

3.4: Grants & acquisition of fee title & conservation easements - Minnesota Department of Natural Resources - Metro Greenways

The DNR Metro Greenways program provided funding to protect significant habitat by acquiring fee title or conservation easements on 104 acres, including 96 acres using LCCMR funding and 8 acres using non-state funding. An additional 152 acres were protected through conservation easements held by the Minnesota Land Trust using two Metro Greenways grants provided through 2007 LCCMR funding, but have been excluded here to avoid double-counting.

Individual protection successes include the following:

- Wilmar - Dakota County
- Pilot Knob, Phase II – Mendota Heights (Dakota County)
- St. Catherine's Bluff – Scott County

3.5: DNR Fish & Wildlife Acquisition - Minnesota Department of Natural Resources – Fisheries & Wildlife

DNR Fisheries & Wildlife acquired two parcels on the Vermillion River in Dakota County, protecting nearly 47 acres of significant habitat, including 33 acres using LCCMR funding and 14 acres with other state funding. One of the parcels was also paid for with 2005 acquisition dollars, resulting in both acres and miles being divided proportionately between the two phases.

3.6: Scientific & Natural Area (SNA) Acquisition - Minnesota Department of Natural Resources – Ecological Services

The DNR SNA program, in cooperation with the Trust for Public Land, acquired two parcels of land totaling 85 acres of high priority native habitat which was designated as Franconia Bluffs SNA. Transaction costs for the acquisition and the boundary survey for Parcel 1 were covered using 2007 LCCMR funding, while the funds to purchase the parcel were covered using 2005 LCCMR funding. The LCCMR accomplishment acres for the acquisition of Parcel 1 are all counted as 2005 funding by the Trust for Public Land.

Parcel 2 consists of 37 acres, 16 acres of which were purchased using 2007 DNR SNA program LCCMR funds. An additional 20 acres were acquired using 2008 LCCMR funds and will be reported in the 2008 work program accomplishments.

Result 4: Provide Community Conservation Assistance

Description: Metro Greenways Program assisted four cities and two counties with the integration of natural resources information into local development and conservation planning and policy decisions. Grants were made to assist communities with a wide range of local conservation planning and implementation activities, such as:

- Obtaining a land cover inventory;
- Collecting and analyzing natural resources information;

- Integrating natural resources information and/or analysis into local plans, practices, and policies;
- Educate local government staff and elected and appointed officials on conservation and development approaches;
- Developing a process or approach to encourage inter-jurisdictional cooperation for management around a share, vital natural resource.

Projects were selected through a request for proposal process (RFP) that included broad eligibility and outreach. Selection criteria addressed the project and community's potential to: preserve ecological value, protect sensitive habitat from impairment, address growth pressures, integrate natural resource data and information into local plans, ordinances and policies. Project sponsors provided a 1:1 match (non-state dollars or in-kind support.)

Summary Budget Information for Result 4:

Trust Fund Budget:	\$ 100,000
Amount Spent:	\$ 94,000
Balance:	\$ 6,000

Deliverable

1. 4-6 Communities Assisted

Final Completion Date: 6/30/2009

Final Report Summary:

DNR Metro Greenways awarded Community Conservation Assistance matching grants to four cities and two counties within the metropolitan area. Priority was given to projects that sought to resolve challenges associated with the conservation of remaining natural habitats in rapidly changing communities.

Metro Greenways provided grants that used a variety of tools in order to integrate natural resources information into local government planning, including the identification of natural areas, the development of ordinances and policies that protect natural resources and the creation of a GIS model to track natural resources.

Grant recipients included the following:

- City of Andover – Natural Resource Inventory
- City of Dayton – Ordinances
- Goodhue County – Policy & Planning
- City of Maplewood – Natural Resource Inventory
- City of Monticello – Natural Resource Inventory
- Scott County – Policy & Planning

V. TOTAL TRUST FUND PROJECT BUDGET:

Please also see the attached Table B and individual work programs for additional detail.

Staff or Contract Services: \$345,901
Community Assistance Grants: \$94,000
Equipment: \$5,292
Development: \$368
Restoration: \$107,330
Acquisition, including easements: \$ 1,851,809
Other: \$ 60,525

TOTAL TRUST FUND PROJECT BUDGET: \$2,500,000 (\$2,465,225 Spent)

Explanation of Capital Expenditures Greater Than \$3,500: N/A

VI. OTHER FUNDS & PARTNERS:

A. Project Partners: Metro Conservation Corridor partners (see Table A) and private landowners, local governments, regional, state and federal agencies, nonprofit organizations and citizen groups.

B. Other Funds Proposed to be Spent during the Project Period: Approximately \$6,800,000 were proposed to be spent during the project period. Actual funds spent or leveraged were: \$2,527,545 of other state funds and \$7,159,563 of other non-state funds (see Table A).

C. Past Spending:

Phase I (2003) - \$4,850,000 ETF
Phase II (2005) - \$3,530,000 ETF
Phase III (2007) - \$2,500,000 ETF

VII. DISSEMINATION: As projects were completed, the individual partners were encouraged to publicize accomplishments through press releases, organization newsletters and websites. These efforts resulted in information being distributed to the public through websites, email lists, daily and weekly newspapers, newsletters, and other print materials. Additionally, once the MeCC database development is complete, the partnership hopes to be able to better disseminate information on its accomplishments through a public web portal.

VIII. REPORTING REQUIREMENTS: Periodic work program progress reports were submitted February 1st and August 1st of each year, starting with February 1, 2008. This is the final work program report.

Metro Conservation Corridors - Phase III date: 1/12/2010
Table A: Summary of Funding & Accomplishments

LCCMR Recommended Dollars: **\$2,500,000**

Result / Activity	Partner	Project Funding						Accomplishments				
		ENRTF 2007 Funds			Other Funds		Total Project Funds Spent (ENRTF, Other State Funds & Non-State Funds combined)	ENRTF		Other Funds		Total Project Acres Completed (ENRTF & Other Funds combined)
		ENRTF 2007 Funds Allocated	ENRTF 2007 Funds Spent	ENRTF 2007 Funds Balance	Other State Funding Spent	Other Non-State Funding Spent		ENRTF 2007 Acres/Miles Completed	Other Funds Acres/Miles Completed	ACRES MILES		
										ACRES	MILES	
1. Coordinate MeCC Program												
1.1. Coordination of MeCC program, local outreach and conservation implementation assistance for two year project term	All partners below - led by DNR Metro Greenways	\$165,000	\$150,572	\$14,428	\$0	\$0	\$150,572					
2. Restore & Enhancement Significant Habitat												
2.1. Restore/enhance significant watershed habitat.	Friends of the Mississippi River	\$53,000	\$52,630	\$370	\$68,370	\$45,330	\$166,330	79		159		238
2.2. Lower Minnesota River Watershed Restoration & Enhancement Project.	Friends of MN Valley	\$34,000	\$34,000	\$0	\$0	\$13,087	\$47,087	165		69		234
2.3. Restore/enhance significant habitat.	Great River Greening	\$60,000	\$60,000	\$0	\$31,000	\$90,000	\$181,000	86		30.5		116.5
2.4. Habitat restoration/enhance grants.	DNR - Metro Greenways	\$32,528	\$30,870	\$1,658		\$89,038	\$119,908	11				11
2.5. Scientific & Natural Area (SNA) restoration & enhancement.	DNR - Ecological Services	\$34,888	\$34,888	\$0			\$34,888	429				429
2.6. Stream habitat restoration	Trout Unlimited	\$65,000	\$52,681	\$12,319	\$0	\$93,058	\$145,739		1.26			0.0
SUBTOTAL		\$279,416	\$265,069	\$14,347	\$99,370	\$330,513	\$694,952	770	1.26	259	0.00	1,029
3. Acquire Significant Habitat												
3.1 Critical Land Protection Program fee title & conservation easement acquisition.	The Trust for Public Land	\$420,000	\$420,000	\$0	\$1,995,000	\$2,320,000	\$4,735,000	8		110		118
3.2. Protecting significant habitat by acquiring conservation easements.	Minnesota Land Trust	\$134,000	\$134,000	\$0	\$372,925	\$2,399,500	\$2,906,425	519		0		519
3.3. Fee acquisition for Mn Valley National Wildlife Refuge.	MN Valley NWR Trust, Inc.	\$210,000	\$210,000	\$0	\$0	\$375,719	\$585,719	49		100		149
3.4. Grants & acquisition of fee title & conservation easements.	DNR - Metro Greenways	\$811,472	\$811,472	\$0		\$1,662,625	\$2,474,097	96		8		104
3.5. DNR Fish & Wildlife Acquisition.	DNR - Fisheries & Wildlife	\$172,000	\$172,000	\$0	\$60,250	\$0	\$232,250	33	0.62	14	0.27	47
3.6. Scientific & Natural Area (SNA) Acquisition.	DNR - Ecological Services	\$208,112	\$208,112	\$0			\$208,112	16				16
SUBTOTAL		\$1,955,584	\$1,955,584	\$0	\$2,428,175	\$6,757,844	\$11,141,603	721	0.62	232	0.27	953
4. Community Conservation Assistance												
4.1 Assist local governments to promote the conservation of natural habitats.	DNR - Metro Greenways	\$100,000	\$94,000	\$6,000		\$71,206	\$165,206					70
TOTAL		\$2,500,000	\$2,465,225	\$34,775	\$2,527,545	\$7,159,563	\$12,152,333	1,491	1.88	490	0.27	2,051

MLT Non-State Funding represents *known* donated value of conservation easements. Value is not known for every project completed.

Metro Conservation Corridors - Phase III
Table B: LCCMR Funding Request - Budget Detail

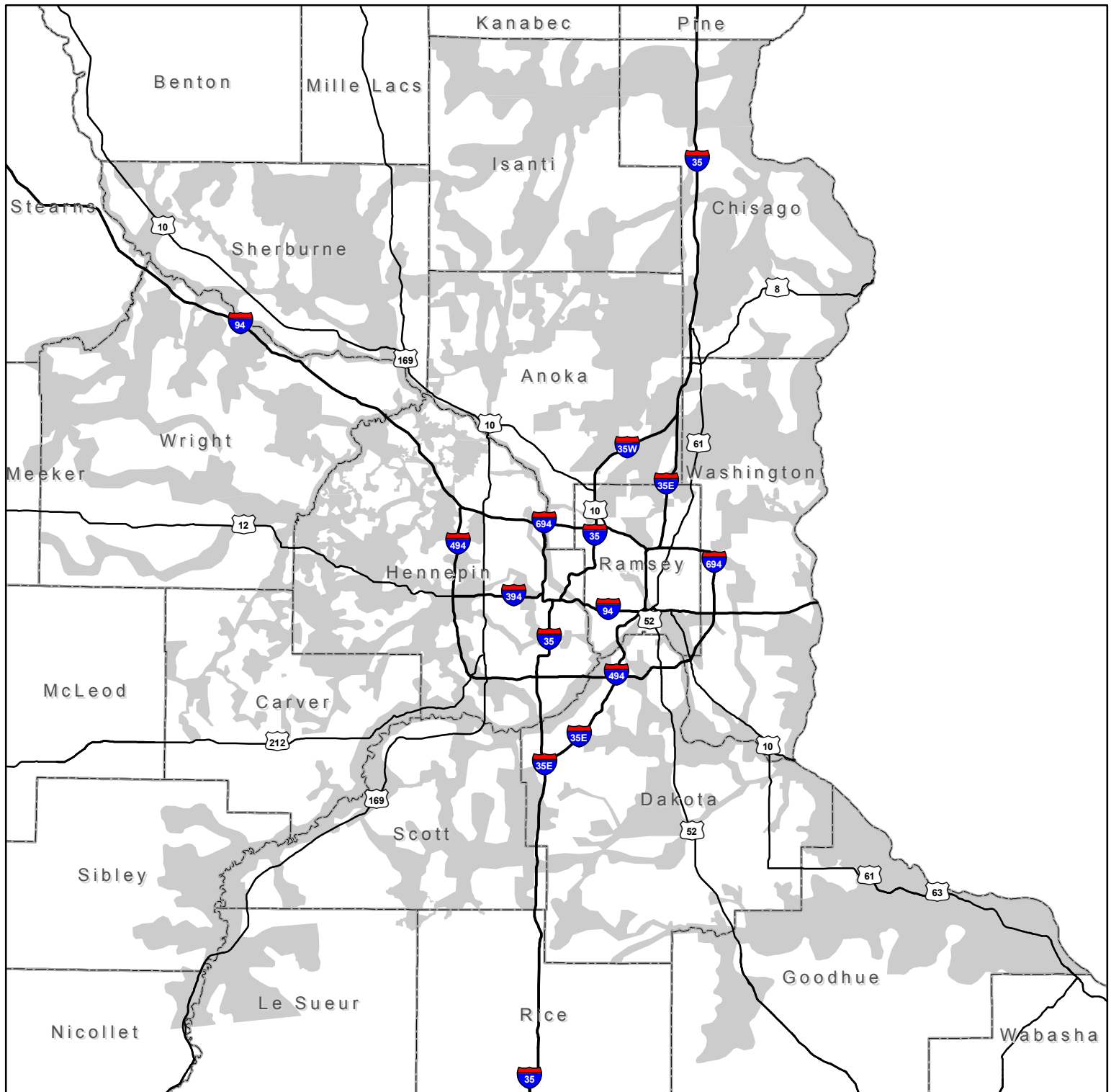
date: 1/6/10





LCCMR Recommended Dollars: \$2,500,000

Activity	Partners	LCCMR Funding Spent							Budget Explanation (staff/contractservices, development, equipment, other)	
		Staff/contract services	Equipm't	Developm't	Restoration	Acquisition	Other	Total		
1. Coordinate MeCC Program										
1.1. Coordination of MeCC program & local outreach and implementation assistance for two year project term	DNR Metro Greenways/DNR OMBS	\$ 150,572							\$ 150,572	Staff to manage and coordinate the program for two years
2. Restore & Enhance Significant Habitat										
2.1. Restore/enhance significant watershed habitat	Friends of the Mississippi River	\$ 52,360			\$ 271				\$ 52,631	Includes hiring contractors to conduct restoration and enhancement activities and purchasing supplies and materials.
2.2. Lower Minnesota River Watershed restoration & enhancement project	Friends of Minnesota Valley	\$ 23,000			\$ 11,000				\$ 34,000	Staff/Contracts: Director of Conservation Programs for project coordination and implementation; Contracts for earth work, installing water control structures, breaking drain tile, etc.; Restoration:native plants and seed, trees, water control structures
2.3. Restore/enhance significant habitat	Great River Greening	\$ 44,535	\$ 1,859		\$ 12,851		\$ 754		\$ 59,999	Staff: Ecologists and Conservation Director; Field Manager; Volunteer Manager; Restorations Technicians; Project Administration. Restoration: Contracts for site prep, prairie seeding; plant, mulch, and seed purchase; travel within Minnesota. Equipment: Seed drill, mower, harrow, roller, sprayers, Rx burn eq't, saws, loppers, etc. Other: Volunteer event supplies (approved food and bevg, port. toilets, tent rentals etc.)
2.4. Habitat restoration/enhance. Grants	DNR - Metro Greenways				\$ 30,870				\$ 30,870	Grants to LGU's and NGO's for restoration and enhancement
2.5. Scientific & Natural Area (SNA) restoration & enhancement	DNR - Ecological Services	\$ 27,959	\$ 3,433	\$ 368	\$ 3,128				\$ 34,888	DNR SNA crew; fleet charges & incidental parts; supplies (e.g. fencing & signs); seeds & seedlings & other supplies.
2.6 Stream habitat restoration	Trout Unlimited	\$ 2,700			\$ 49,210		\$ 771		\$ 52,681	Staff: Project Manager for promotion of stream restoration in the Metro area; Restoration: hourly rate for bulldozers, excavators, and dump trucks; rock and materials; Other: Display to promote stream restoration projects
SUBTOTAL		\$ 150,554	\$ 5,292	\$ 368	\$ 107,330	\$ -	\$ 1,525	\$	\$ 265,069	
3. Acquire Significant Habitat										
3.1 Critical Land Protection Program fee title & conservation easement acquisition	The Trust for Public Land					\$ 420,000			\$ 420,000	To protect 48 acres at Franconia St. Croix Bluffs/Franconia Bluffs SNA, a project that also used the balance of TPL's Phase II 2005 MeCC funding; and to protect 70 acres on Green Lake/ Camp Ojiketa, a project that also used the balance of TPL's Phase IV 2008 MeCC funding.
3.2. Protecting significant habitat by acquiring conservation easements	Minnesota Land Trust	44,589				30,411	59,000		\$ 134,000	Staff: Includes conservation director or land protection staff; staff attorney; and support staff. Acquisition: \$28,657 for costs associated with acquiring donated or purchased CE's, \$1,754 for mileage and related travel expenses Other: \$59,000 for easement stewardship .
3.3. Fee acquisition for Mn Valley National Wildlife Refuge	MN Valley NWR Trust, Inc.					\$ 210,000			\$ 210,000	Fee title acquisition of significant habitat in Minnesota River Valley
3.4. Grants & acquisition of fee title & conservation easements	DNR - Metro Greenways					\$ 811,472			\$ 811,472	Grants to LGUs and NGOs for direct acquisition of fee title & conservation easements.
3.5. DNR Fish & Wildlife Acquisition	DNR - Fisheries & Wildlife					\$ 172,000			\$ 172,000	DNR fee acquisition of lands for AMA and/or WMA, including related real estate transaction costs
3.6. Scientific & Natural Area (SNA) Acquisition	DNR - Ecological Services	\$ 186				\$ 207,926			\$ 208,112	Acquisition: fee title acquisition, including related real estate transaction costs.
SUBTOTAL		\$ 44,775				\$ 1,851,809	\$ 59,000	\$	\$ 1,955,584	
4. Community Conservation Assistance										
4.1 Assist local governments to promote the conservation of natural habitats	DNR - Metro Greenways						\$ 94,000		\$ 94,000	Grants to assist local governments with gathering and integrating natural resources information into local development and conservation planning and policy decisions
SUBTOTAL							\$ 94,000	\$	\$ 94,000	
TOTAL		\$ 345,901	\$ 5,292	\$ 368	\$ 107,330	\$ 1,851,809	\$ 60,525	\$	\$ 2,465,225	

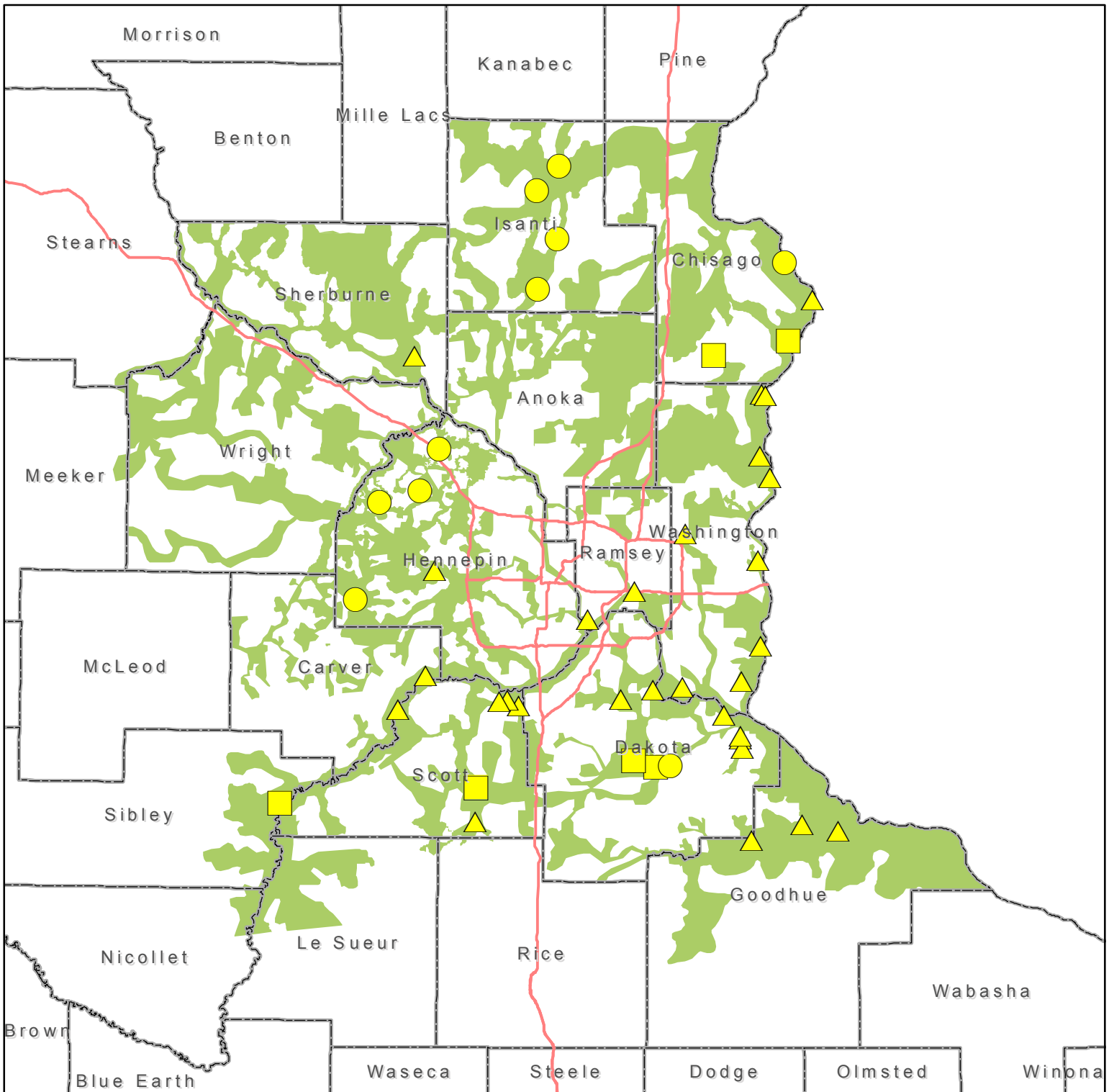
Figure 1

Metro Conservation Corridors 2007 Focus Areas



-  Metro Conservation Corridors
-  Interstate Highways
-  Secondary Highways
-  County Boundaries

Metro Conservation Corridors Projects



MeCC projects - 2007

- ▲ Restoration
- Conservation Easement
- Fee