



# LEGISLATIVE-CITIZEN COMMISSION ON MINNESOTA RESOURCES (LCCMR) 2009-10 Biennial Report Overview

## Overview: January 1, 2009—December 31, 2010

### Special points of interest:

- New logo for the Environment and Natural Resources Trust Fund introduced in 2009.
- \$51.6 million was recommended and approved to go toward 134 individual projects around the state (ML 2009, ML 2010).
- For FY 2012-13, \$51.4 million is being recommended to fund 92 individual projects around the state.
- During 2009-2010, LCCMR provided administration and oversight for 398 individual projects, representing approximately \$163 million in appropriations, in various stages of their timelines, ranging from developing work plans in preparation to begin to reaching completion and submitting final reports.
- LCCMR heard from numerous public and private sector environment and natural resources experts and visited natural resource sites around the state.

During the period between January 1, 2009 and December 31, 2010 the Legislative-Citizen Commission on Minnesota Resources (LCCMR):

- Submitted and received passage of two funding recommendations bills—one each to the 2009 Legislature and 2010 Legislature—providing \$51.6 million to 134 natural resources projects around the state.
- Issued two Requests for Proposal (RFP) to conduct selection process for funding recommendations to the 2010 Legislature and 2011 Legislature (the process for recommendations to the 2009 Legislature was conducted prior to January 1, 2009).
- Received, reviewed, and evaluated 481 proposals replying to the 2010 and 2011-12 RFPs. 140 proposals (163 individual projects) were selected for recommendation.
- Finalized recommendations to the 2011 Legislature of \$51.4 million to 92 projects around the state (bill introduction after December 31, 2010).
- Conducted peer review process for 39 research projects recommended for funding.
- Administered 398 open projects, representing approximately \$163 million in appropriations, in various stages of their timelines, 144 of which reached completion in 2009-10, including projects begun in 2003 (1), 2005 (11), 2006 (4), 2007 (76), 2008 (53), 2009



**Western prairie-fringed orchid (*Platanthera praeclara*) growing on Touch the Sky Northern Tallgrass Prairie National Wildlife Refuge near Luverne, MN—ENRTF Project Kickoff Event, 07/10/10**

(2), and 2010 (1).

- Visited natural resources sites in northeastern MN, the Twin Cities metro area, and the Minnesota River Valley in Central MN.
- Collaborated with the Minnesota Lottery to create and launch a new logo for the Environment and Natural Resources Trust Fund.
- Heard from numerous natural resources experts from both the public and private sector.
- Continued support for activities protecting and enhancing Minnesota's natural resources and providing benefit over an extended period of time.

### Contents:

MN's Environment and Natural Resources Trust Fund	2
2011: Project Recommendations	2
2010: Projects Funded	2
2009: Projects Funded	3
Highlights of Projects Completed or Underway	3
2011-2012: Request for Proposal (RFP)	3
About LCCMR	4
2009: Information Gathering	4

## LCCMR Process

The LCCMR makes funding recommendations to the MN legislature for special environment and natural resources projects, primarily from the Environment and Natural Resources Trust Fund. These recommendations are the product of a competitive, multi-step proposal and selection process.

Each funding cycle, a Request for Proposal (RFP) is issued for funding priorities determined by the Commission based on its 6-year strategic plan and ongoing information gathering activities, including expert-led issue seminars and visits to natural resource sites around the state.

The RFP is open to everyone with innovative ideas for environment

and natural resources projects that could provide multiple ecological and other public benefits to Minnesota.

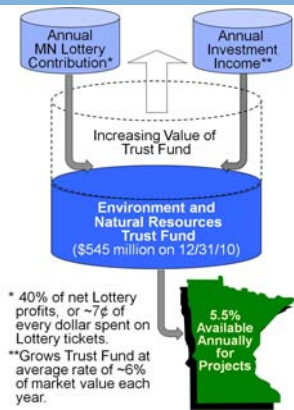
The LCCMR reviews, evaluates, and ranks all proposals submitted. A selection of the highest ranked proposals are invited to present before the LCCMR. Finally, based on the total dollars available, a subset of the proposals are chosen to recommend to the legislature for funding.

The funding recommendations go before the MN House and Senate in the form of a bill, and upon passage the bill goes to the Governor to be signed into law. Funding becomes available to projects beginning July 1 of the next fiscal year.

The LCCMR has oversight over projects funded. Projects must have a work program approved, provide ongoing project updates, and deliver a final report upon project completion.

For the recommendations to the 2011 Legislature, a total of 241 proposals requesting a combined \$162 million were received in response to the 2011-12 RFP and, from those, a total of 92 proposals were recommended for some portion of the \$50.6 million available.

The LCCMR is made up of 17 members: 5 Senators, 5 Representatives, 5 citizens appointed by the governor, 1 citizen appointed by the House, and 1 citizen appointed by the Senate.



## About MN's Environment and Natural Resources Trust Fund

The Environment and Natural Resources Trust Fund (ENRTF) is a permanent fund in the state treasury established in the Minnesota Constitution through voter approval in 1988.

It holds assets that can be appropriated by law, "for the public purpose of protection, conservation, preservation, and enhancement of the state's air,

water, land, fish, wildlife, and other natural resources."

The ENRTF was created to provide a long-term, consistent, and stable source of funding for innovative activities directed at protecting and enhancing Minnesota's environment and natural resources.

The money in the ENRTF originates from a combination of

contributions and investment income. Forty percent of the net proceeds from the Minnesota State Lottery, or ~7 cents of every dollar spent playing the lottery, are contributed to the ENRTF each year. Once deposited, contributions become part of the principal balance and are invested in a combination of stocks and bonds.

## ML 2011: Project Recommendations (to begin July 1, 2011)

Approximately \$50.6 million is being recommended to fund 92 individual projects around the state to begin July 1, 2011.

**Natural Resource Inventory, Monitoring, Mapping, and Planning:** ~\$11.1 million to obtain critical information and guide relevant decisions and efforts, including acceleration of County Biological Survey, County Geologic Atlas, State-wide Soil Survey, Wetlands Inventory, water quality monitoring, springshed mapping, local conservation planning, state-owned lands management, and recommended guidelines for prairie management, forest management, and energy and water conservation

**Terrestrial and Aquatic Habitat Acquisition:** ~\$12.5 million for acquisition of an estimated 3,076 acres of habitat in a com-

bination of fee title (1,766 acres) and conservation easements (1,310 acres).

**Terrestrial and Aquatic Habitat Restoration, Enhancement, and Improvement:** ~\$2.4 million for restoration, enhancement, and improvement activities on ~6,141 acres.

**Parks and Trails Acquisition:** ~\$6.5 million for acquisition of ~770 acres in state parks and trails and regional parks and trails.

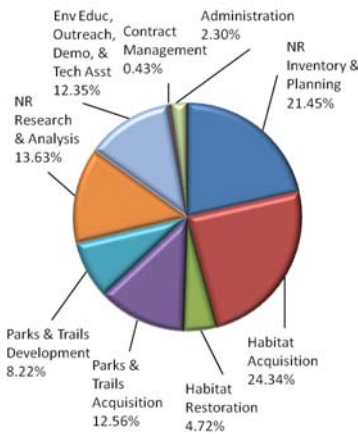
**Parks and Trails Development:** ~\$4.2 million for infrastructure development in Lake Vermilion State Park and regional parks and trails.

**Natural Resource Research and Analysis:** ~\$7 million to advance our knowledge and provide recommendations for addressing issues relating to spe-

cies protection, ecosystem conservation, bioenergy, water quality and conservation, forestry, invasive species, pollution, and sustainable building.

**Environmental Education, Outreach, Demonstration, and Technical Assistance:** ~\$6.3 million for efforts that will educate Minnesotans on topics including energy conservation, water conservation, natural resource science, and outdoor recreation; demonstrate options for energy efficiency; and provide training and technical assistance on pollution prevention and natural resource conservation and management.

**Other:** ~\$1.4 million for FY 2012-2013 LCCMR administration (\$1,182,000) and DNR contract management of projects by non-state entities (\$220,000).



## ML 2010: Projects Funded (MN Laws 2010, Chapter 362)

Approximately \$26 million was appropriated to fund 73 individual projects around the state.

**Natural Resource Inventory, Monitoring, Mapping, and Planning:** ~\$3.6 million to allow for efforts to obtain critical information and guide relevant decisions and efforts, including acceleration of County Geologic Atlas; Wetlands Inventory; Breeding Bird Atlas; and plans and recommended guidelines for bird conservation, prairie management, forest management, farmland preservation, and watershed protection.

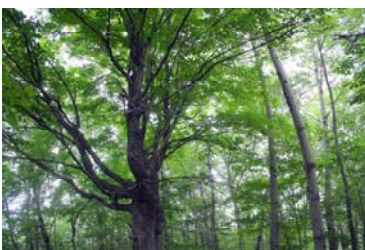
**Terrestrial and Aquatic Habitat Acquisition:** ~\$7.1 million for acquisition of an estimated 2,900 acres of land and habitat in a combination of fee title (590 acres) and conservation easements (2,309 acres).

**Terrestrial and Aquatic Habitat Restoration and Improvement:** ~\$2.4 million for restoration and improvement activities on ~5,800 acres.

**Natural Resource Research and Analysis:** ~\$7.3 million to advance our knowledge and provide recommendations for addressing issues relating to

aquatic contaminants, groundwater, invasive species, pollinator decline, carbon sequestration, unique ecosystems, and energy production.

**Environmental Education, Outreach, Demonstration, and Technical Assistance:** ~\$5.6 million for efforts that will educate Minnesotans on topics including climate change, wildlife, ecosystems, and water resources; demonstrate options for energy conservation; and provide training, experiences, and outdoor spaces to facilitate learning about the natural world.



Fraconia Bluffs Scientific and Natural Area in Chisago County, MN—LCCMR site visit, 06/17/09

## ML 2009: Projects Funded (MN Laws 2009, Chapter 143)

Approximately \$25.7 million was appropriated to fund 63 individual projects around the state.

**Natural Resource Inventory and Planning:** ~\$7.9 million to obtain critical information and guide relevant decisions and efforts, including acceleration of County Biological Survey, County Geologic Atlas, State-wide Soil Survey, restorable wetland inventorying, springshed mapping, identification and prioritization of critical lands, and plans for natural

resource conservation and management.

**Land and Habitat Acquisition:** ~\$9 million for acquisition of ~2,000 acres of land and habitat in a combination of fee-title (1,195 acres) and conservation easement (880 acres).

**Land and Habitat Restoration:** ~\$2.2 million for restoration activities on ~5,100 acres.

**Natural Resource Research and Analysis:** ~\$2.7 million to advance our knowledge and provide recommendations for addressing issues relating to bal-

last water, endocrine disruptors, invasive species, artificial drainage, climate change, and resource management.

**Environmental Education and Outreach:** ~\$2.5 million to assist communities with local conservation efforts and develop and pilot programs for increasing residential energy efficiency statewide.

**Other:** ~\$1.4 million for FY 2010-2011 LCCMR administration (\$1,254,000) and DNR contract management of projects by non-state entities (\$158,000).



ENRTF funded project Minnesota Schools Cutting Carbon's Earth Day at the Capitol Event, St. Paul, MN—04/22/10

## Projects Completed: January 1, 2009—December 31, 2010

Between January 1, 2009 and December 31, 2010, a total of 144 projects funded by the Environment and Natural Resources Trust Fund through the LCCMR process reached completion. This includes projects begun in 2003 (1), 2005 (11), 2006 (4), 2007 (76), 2008 (53), 2009 (2), and 2010 (1).

Major accomplishments resulting from the projects completed include:

- Foundational natural resource data acquired pertaining to native prairies, wildlife disease,

Lake Superior, shoreline, wetlands, groundwater, soils, and ecology and species distribution around the state.

- Expansion of parks, trails, and other outdoor recreational opportunities around the state by more than 1,600 acres.
- Protection of more than 6,300 acres of land and habitat through fee title and conservation easement acquisition.
- Habitat restoration activities performed on more than 32,500 acres.
- Research and analysis further-

ing goals for invasive species control, conservation drainage, increased energy independence, improved water quality and reduced water contamination, improved sustainable forestry, increased water sustainability, and understanding observed and predicted changes in climate conditions.

- Education, outreach, and technical assistance efforts on sustainable natural resource uses and practices in the areas of wildlife, groundwater, prairie stewardship, wetland restoration, and the Mississippi River.

**The LCCMR follows a mission of providing long-term secure support for activities whose benefits to Minnesota's environment and natural resources are realized only over an extended period of time.**

## Highlights of Projects Completed or Underway

**State Parks and Trails Acquisition** [ML 2007, ML 2008: completed; ML 2009, ML 2010: underway]: Ongoing efforts expanding outdoor recreational opportunities around the state. ML 2007 and 2008 funds funded expansion of 5 parks and 3 trails. ML 2009 and 2010 are funding expansion of 6 parks and 1 trail.

**Metro Conservation Corridors (MeCC) and MN Habitat Conservation Partnership (HCP)** [ML 2007, ML 2008: completed; ML 2009, ML 2010: underway]: Partnerships of conservation organizations in metro and outstate collaborating to restore, enhance, and protect critical land and habitat throughout MN. ML 2007 and 2008 funded protection of 3,691 acres and restoration on 25,577 acres. ML 2009 and 2010 are funding

protection of 1,528 acres and restoration on 5,955 acres.

**MN County Geologic Atlas** [ML 2007: completed; ML 2008, ML 2009, ML 2010: underway]: Ongoing, county-by-county effort to map locations and vulnerability of MN's groundwater to support wise use and protection. ML 2007 funded progress on surveys for 2 additional counties, and ML 2008, 2009, and 2010 are funding progress on 7 counties.

**MN County Biological Survey** [ML 2007: completed; ML 2008, ML 2009: underway]: Ongoing, county-by-county effort to identify significant natural areas and collect and interpret data on the distribution and ecology of plants and animals throughout MN. ML 2007 and ML 2008 funded progress on surveys for 15 additional coun-

ties, and ML 2010 is funding progress on 5 counties.

**Biological Control of European Buckthorn and Garlic Mustard** [ML 2007: completed; ML 2010: underway]: Ongoing, multi-phase effort to develop and implement safe biological control for European buckthorn and garlic mustard. ML 2007 funds helped uncover 3 potential options for buckthorn, and ML 2010 funds will continue those studies.

**MN Soil Survey** [ML 2007, ML 2008: completed; ML 2009: underway]: Ongoing, county-by-county analysis and mapping of the state's soils providing critical data for protecting and managing MN habitat, wetlands, and water resources. ML 2007 and 2008 funded progress on 7 additional counties, and ML 2009 is funding progress on 5 counties.



Spring Peeper Meadow—ENRTF funded model wetland restoration at Minnesota Landscape Arboretum near Chaska, MN—07/22/09



## Legislative-Citizen Commission on Minnesota Resources (LCCMR)

Room 65, State Office Building  
100 Rev. Dr. Martin Luther King Jr. Blvd.  
St. Paul, MN 55155

Phone: (651) 296-2406  
TTY: (651) 296-9896 or 1-800-657-3550  
Fax: (651) 296-1321  
E-Mail: [lccmr@lccmr.leg.mn](mailto:lccmr@lccmr.leg.mn)  
Web: [www.lccmr.leg.mn](http://www.lccmr.leg.mn)

### LCCMR Staff

Susan Thornton, Director  
Shelley Shreffler, Assistant Director  
Michael McDonough, Manager Research and Planning  
Mike Banker, Communications/Outreach Manager  
Diana Griffith, Commission Assistant

## About LCCMR

The LCCMR is made up of 17 members (5 Senators, 5 Representatives, 5 citizens appointed by the governor, 1 citizen appointed by the House, and 1 citizen appointed by the Senate). The function of the LCCMR (formerly LCMR) is to make funding recommendations to the Minnesota Legislature for special environment and natural resource projects, primarily from the Environment and Natural Resources Trust Fund. These projects help maintain and enhance Minnesota's environment and natural resources. The LCCMR developed from a program initiated in 1963. Since 1963, over \$650 million has been appropriated to more than 1,300 projects recommended by the Commission to protect and enhance Minnesota's environment and natural resources.

### Commission Members Serving During 2009-2010

Sen. Ellen Anderson  
Alfred Berner—Appointed by the Governor  
Jeff Broberg (Co-Vice Chair)—Appointed by the House  
Rep. Lyndon Carlson  
Sen. Satveer Chaudhary  
Tom Cook—Appointed by the Governor [2010 only]  
Sen. Dennis Frederickson (Co-Vice Chair)  
Nancy Gibson (Co-Chair)—Appointed by the Governor  
John Herman—Appointed by the Senate  
Rep. Larry Howes (Co-Vice Chair)  
Norman Moody—Appointed by the Governor  
Mary Mueller—Appointed by the Governor [2009 only]  
Sen. Pat Pariseau  
Rep. Tom Rukavina  
Rep. Ron Shimanski  
Sen. Jim Vickerman (Co-Chair)  
Rep. Jean Wagenius (Co-Chair)  
Elizabeth Wilkens—Appointed by the Governor

## Information Gathering: January 1, 2009—December 31, 2010



2,341 feet underground, Soudan Iron Mine State Park, St. Louis County, MN—LCCMR site visit, 08/19/09

In 2009-10, the LCCMR engaged in numerous activities that informed its priorities for projects it recommended for funding to the MN Legislature.

Natural resources sites around the state were visited:

- 2009 included a visit to the St. Croix River Valley to learn about issues pertaining to watersheds, Scientific and Natural Areas, prairie restoration, endangered species, invasive species, groundwater and surface water interac-

tions, and Metropolitan Regional Parks, and a visit to Northeastern MN to examine issues pertaining to mining, forestry, renewable energy, state parks and trails, species protection, and water quality.

- 2010 included a visit to the Minnesota River Valley in Central MN to examine issues pertaining to fisheries, water quality, and rare and unique habitats, and a visit to the Mississippi River corridor in the Metro area to examine issues pertaining to the Mississippi River Gorge.

To determine possible areas of coordination and collaboration with other natural resources bodies, in 2009 the LCCMR held a joint meeting with the Lessard-Sams Outdoor Heritage Council (LSOHC), and in 2010 the LCCMR went on a joint site visit with the LSOHC and the Clean Water Council.

In addition to the presentations heard on site visits and the 169 interactive presentations the LCCMR chose to hear from project proposers responding to the RFPs during this period, the LCCMR also heard several presentations and expert-led issue seminars on topics including:

- Gulf oil spill and MN's migrating birds
- Ecosystem services
- Shoreline regulations
- Conservation easements
- Natural Resource and community conservation planning
- New state grants management policies
- Environmental and outdoor education
- Emerging tree diseases and pests

- Updates from current projects
- Statewide water planning

Finally, public input on prioritization for Environment and Natural Resources Trust Fund expenditures continued to be gathered through an online survey on the LCCMR website.



Members of LCCMR, Lessard-Sams Outdoor Heritage Council, and Clean Water Council hearing from DNR at granite rock outcrop site near Minnesota River in Renville County, MN—LCCMR joint site visit, 07/21/10